

**The American Red Cross  
of Greater Los Angeles**



**Board of Directors  
2010 — 2011**

## DAVID C. ALLEN



David Allen is a partner with Akin Gump. He serves on the firm's management team and is the partner in charge of the Los Angeles office.

David specializes in commercial litigation, energy, class action and product liability. He has more than 25 years of experience trying cases around the country in state and federal courts, arbitral venues and multi-district litigation. He practiced in Akin Gump's Washington, D.C. office before relocating to California in 1997 to open the firm's Los Angeles office. He is a member of the bar in California, Virginia and the District of Columbia.

David received his bachelor's degree with honors from Providence College and his J.D. from The George Washington University, where he was a member of The George Washington Law Review.

## JOEL ANIK



Joel Anik is the West Region managing partner of Grant Thornton, LLP, overseeing operations for 13 offices in the Western U.S. Prior to joining Grant Thornton, Joel was the managing partner for the Hartford, CT office of Arthur Andersen LLP and was associated with that firm's Boston office for 25 years.

Joel holds a bachelor's degree in accounting from Northeastern University and is a certified public accountant. With more than 35 years of industry and public accounting experience, Joel is a member of the American Institute of Certified Public Accountants, the Massachusetts Society of Certified Public Accountants and California Society of CPAs.

Joel has served as a director and volunteer with numerous community, cultural and civic organizations, including United Way and Junior Achievement.

## **CHRIS BRANDT**



Chris Brandt is a principal at Deloitte’s Los Angeles office, leading the Health Care Provider Consulting Practice as the national sector leader. He has 23 years of health care experience, with a focus on technology-enabled process change and executable strategy development and implementation.

He holds a bachelor’s degree from Claremont McKenna College and a master’s degree in public health from Loma Linda University.

Prior to joining Deloitte in 2004, Chris was with Pacificare Health Systems and Ernst & Young (which became Capgemini Healthcare), where he held several leadership positions.

## **GARY CAMPANELLA**



Gary Campanella is senior manager of Office Services for The Capital Group Companies, where he is responsible for managing central and support services, including facility management, meeting services, and office safety and security teams. Prior to joining The Capital Group, Gary worked as a mediator for the Superior Court of Los Angeles and managed the northeast region for a New Jersey-based trucking company. Gary holds a bachelor’s degree in English from Ripon College and has completed course work for a master’s in English from the University of Massachusetts, Boston.

He is currently serving as the secretary of the board of directors.

Some of his avocational achievements include: hiking the 2,700-mile Pacific Crest Trail; volunteering as a backpacking instructor and wilderness first responder for the Appalachian Mountain Club; and mountain climbing

## **WILLARD Z. CARR, JR.**



Willard Carr is an advisory counsel with the law firm of Gibson, Dunn & Crutcher. He has been with the firm since 1952 and specializes in labor relations and employment law.

A graduate of Purdue University with a bachelor's degree, he earned his J.D. at Indiana University Law School, where he was editor of the Indiana Law Journal. As a U.S. Air Force captain, he served in the Judge Advocate General's Department. In 1963, he was admitted to practice before the U.S. Supreme Court.

Willard is a past chapter chairman and a life member of the board. In addition to his service with Red Cross, he is on the board of trustees and is a founding member of the Los Angeles Police Memorial Foundation, past chairman of the men's advisory committee of the L.A. County-USC Medical Center Auxiliary, and a member of the advisory board of the California State Parks Foundation. He also has served on committees and boards for the Greater Los Angeles Zoo, the Boy Scouts of America and the Pacific Legal Foundation. He is past chair of both the Los Angeles Chamber of Commerce and California Chamber of Commerce.

Willard and his wife, Margaret, have two sons, Clayton and Jeffrey. He enjoys tennis and hiking.

## **MARTIN A. COZYN**



Martin Cozyn is executive vice president of Human Resources for Occidental Petroleum Corporation responsible for employee relations, industrial relations, compensation, benefits, welfare programs and executive compensation. He also serves as a committee member overseeing the investment and administration of retirement and savings plan assets and manages the company's real estate and administrative functions.

Prior to joining Occidental, Martin worked for 24 years at Nortel Networks in Toronto and North Carolina, holding increasingly responsible positions in the human resources area. Most recently, Martin served as Nortel's vice president, Global Human Resources.

He is currently serving as co-chair of the chapter's Volunteer Programs Committee and as chair of the Volunteer Committee.

Martin and his wife Kathy relocated to Los Angeles from the Raleigh, NC area. They have two college-age children, Adam and Ashley, who attend Virginia Tech and Wake Forest University, NC.

## DAVID DiCRISTOFARO



David DiCristofaro is senior vice president and regional president of Wells Fargo's Greater San Gabriel Community Bank in Greater Los Angeles. He oversees 600 financial services professionals at 31 retail banking stores. A 13-year veteran of the company, David has served as managing director of online banking and is head of finance and strategy for Community Banking in Wells Fargo's Northern California and L.A. Metro regions.

Prior to joining Wells Fargo, David worked with Financial Institutions Consulting Group, FinExc Group LLC as senior consultant and CFO, and Roosevelt Bank as vice president of corporate planning.

## DAVID FUHRMAN



David Fuhrman is chief executive officer of Willis Insurance Services of California, Inc. Los Angeles operations. He joined Willis in 2005 after 21 years in the insurance industry, where he served in a variety of leadership roles.

David has a bachelor's degree from Dartmouth College, where he was the captain of the football team, participated in two Ivy League championships and was named a National Football Foundation Hall of Fame Scholar Athlete.

He is currently serving as vice chair of the board and as co-chair of the chapter's Development Committee.

A United Way of Greater Los Angeles board member and volunteer since 1998, David was chairman of the 2005-06 Community Campaign. He also served as chair of the United Way's Leadership Circles and chair of the Alexis de Tocqueville Society. David is a board member of St. Anne's and the Weingart Center, where he served as chair. He is a past member of the Fraternity of Friends for the Music Center.

## **BETHANY W. GEORGE**



**Bethany W. George, a consultant with Heidrick & Struggles, has more than 16 years experience as an executive search professional. In addition to her extensive experience recruiting CEOs and board directors, Bethany conducts national searches for executives across a variety of industries. Previously, Bethany served as a consultant in the Los Angeles office of Highland Partners and was a founding member of the Global Board Practice. She began her career as a research associate with Korn/Ferry International.**

**She is currently serving as a chair of the chapter's Nominating & Board Development Committee.**

**Bethany received her bachelor's degree with honors from Cal Poly, San Luis Obispo. She resides in Los Angeles with her husband, David, and two children, Jack and Annie.**

## **ROD HAGENBUCH**



**Rod Hagenbuch is the COO of Hillcrestwells Advisors LLC. He worked for 32 years at Merrill Lynch, managing offices in four cities around the country. His education includes: bachelor's degree in economics, political science and urban studies from Michigan State University; certified financial manager graduate of the Donald T. Regan School of Financial Management; and executive marketing program graduate of Stanford University.**

**Rod, a life member of the board, served as chapter chairman from 2002-2005. He was also a member of the Executive Committee and vice chair for Financial Development.**

**He has served on more than 30 non-profit boards and currently serves on the boards of United Cerebral Palsy of Los Angeles, Town Hall Los Angeles, The Fraternity of Friends, and chairs the board of the Employers Group.**

**He and his wife, LaVerne, have three children, Kris, Beth and Patricia. In his leisure time, Rod enjoys running, skiing, reading and community activities.**



## MELONI HALLOCK

Meloni Hallock is chief executive officer of Acacia Wealth Advisors. Her education includes a bachelor's degree from the College of William and Mary and an MBA from the University of Missouri at St. Louis.

Meloni has previously served as vice chair of the chapter board of directors. She also has been active with the International Institute.

Meloni is married to Rick Noecker and has two children, Susan Hallock and Melissa Nicholson. In her leisure time, she enjoys travel.

## JOAN E. HERMAN



Joan E. Herman is retired from Well Point, Inc., named Fortune magazine's most respected health benefits organization for five consecutive years, where she held several positions: president and CEO of the Consumer Business Unit; president and CEO of the Specialty, Senior & State Sponsored Business SBU; and president and CEO of e-Senior, Specialty & State Sponsored Programs. Joan was previously with Phoenix Life Insurance Company and Metropolitan Life Insurance Company.

She holds B.A., M.S. and MBA degrees from Barnard College, Yale University and Western New England College and is a graduate of the UCLA Directors Education and Certification Program.

Joan has been active in a number of civic activities, including service on the boards of the Southern California Leadership Network, Center Dance Arts and South Central Scholars Fund. Professional activities include service on the boards of MCS, Medix Resources, Health Insurance Assn. of America and the American Academy of Actuaries. She is former chair of the Society of Actuaries Health Section Council and a member of the advisory board for Bayer Diabetes Care.

## KIRK HYDE



Kirk Hyde is president of the Hyde Family Foundation, as well as the general partner of the KPC Limited Partnership. He was president and CEO of Kirk Plastic Company, Inc., and retired in 1999 after 32 years with the company. His education includes a bachelor's degree from USC.

Kirk's family has a long association with the American Red Cross. His grandmother was a volunteer in World War I and his mother was a blood donor during World War II. A lifetime board member, he has been a member of the board since 1990 and served as past chapter chairman. In 2002, he served on the Resolutions Committee at the national convention. He has also been a board member of the Southern California Regional Blood Services. Kirk has a long history of community involvement, including local charitable groups and youth sports programs. He was a volunteer with the Big Brothers of Greater Los Angeles.

Kirk and his wife, Angi, have five children.

## LOIS INGHAM



Lois Ingham is managing director and private client advisor for Wealth Advisory Services and Wilmington Trust. She holds a bachelor's degree in mathematics from UC Riverside, an MBA from Cal Poly Pomona and is a Chartered Financial Analyst (CFA).

Lois is currently serving as chair of the chapter's Finance and Investment Committee.

She is a member of the Investment Committee of the American Heart Association, a reading tutor through the HOSTS mentor program at California Hospital Medical Center and served on the Advisory Council for the Volunteer Bureau of the City of Los Angeles. When her children were younger, she was active in several youth organizations, including in the American Youth Soccer Organization as a coach, board member and director of coaches.

Lois and her husband, Gary, have two adult children, Deanne and Alyson.

## JOSEPH KANIMIAN



Joseph Kanimian owns a law firm specializing in civil litigation, business transactions and pro bono work for several non-profit organizations. Joseph holds a bachelor's degree, master's degree and J.D. from the University of LaVerne, where he was an administrator and professor of Armenian Studies for nine years. He is a member of the California Bar and lifetime sustaining member of the Consumer Attorneys Association of Los Angeles.

Joseph serves on numerous committees of the Western Diocese of the Armenian Church of North America and has authored many articles in Armenian newspapers concerning community life.

He and his wife, Karine, have a son who attends USC.

## MARIANNE LAMUTT



Marianne Lamutt is executive vice president and director of City National Bank's Human Resources Division and a member of the bank's Executive Committee. Marianne received a bachelor's degree in psychology and sociology and a master's degree in rehabilitation counseling from Bowling Green State University in Ohio.

Prior to joining City National Bank, she served as a senior vice president at Bank of the West. She also worked in various human resources positions at Sony Pictures Entertainment Inc., The Walt Disney Company, Carter Hawley Hale, Rhode Island-based Textron Corporation and Lockheed Corp.

Marianne currently is serving as chair of the Health and Safety Committee.

She also serves on the board of directors for the Ronald McDonald House Charities of Southern California. Marianne resides in Pasadena.

## **EDMOND LELO**



Edmond Lelo is area head of the Cross-border Relationship Manager Team for Wells Fargo International Group. He joined Wells Fargo in 1988 and has served as division manager of Wells Fargo Business Credit Inc. in Denver, Wells Fargo's South Colorado Regional Commercial Banking Office and area head of Wells Fargo Commercial Banking Group in the Greater Los Angeles region.

Edmond holds both a bachelor's degree in business administration and an MBA from Oral Roberts University in Tulsa, Oklahoma, and a master's degree in international management from Thunderbird School of Global Management.

Edmond is a past chairman of the chapter board of directors and chaired the Advancement Committee. He has also served on the boards of the California Legislative Black Caucus Foundation, the Latin Scholarship Fund and Center Theater Group.

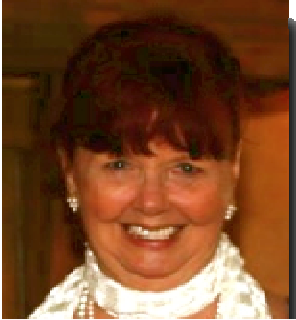
## **ROB LEVY**



Rob Levy is the senior vice president, Worldwide Distributor Sales and Marketing for Herbalife. He is responsible for sales strategy, product marketing, distributor services and operations, distributor marketing, business development, and events and promotions.

Prior to joining Herbalife, Rob was with Lear Astronics, Corp, a leading aviation company, where he was responsible for contract and pricing groups.

## **PATRICIA MAC NEIL**



Patricia Mac Neil is a community volunteer with more than 40 years experience with non-profit organizations. She owned and managed her own travel agency for 13 years.

Pat has been a leadership volunteer with the American Red Cross of Greater Los Angeles since 1994 and currently serves as chapter duty officer, government liaison manager and response volunteer chair.

She has been recognized with numerous awards, including Volunteer of the Year L.A. County; Citizen of the Year, Topanga; and Volunteer of the Year for the Greater Los Angeles chapter, which she received twice.

Her other non-profit leadership experience includes president of the 31<sup>st</sup> District PTA (San Fernando Valley), vice president, board of directors, San Fernando Valley Girl Scout Council and president of Topanga Coalition for Emergency Preparedness for 17 years.

Pat has two adult children, five grandchildren and resides in Topanga with her husband Jack. They have been married for 53 years.

## **IRV MARGOL**



Irv Margol is a consultant with Eddy Associates, Inc. He has special expertise in executive coaching, career transition, change leadership and team building.

Prior to joining Eddy Associates, Irv was senior executive consultant for Right Management Consultants, Inc., and a co-managing director of Janotta Bray, an international career consulting firm specializing in executive outplacement. From 1969 to 1993, he was executive vice president and chief administrative officer of Security Pacific Corporation.

Irv holds a bachelor's and master's degree from Washington University. He has taught executive management courses at UCLA, Duke University, University of Colorado and University of Washington and currently teaches the Change Management course at the UCLA Ojai Program.

Irv is a past chairman of the chapter board of directors and is chair of the board of the American Red Cross Holocaust Tracing Center. He currently serves on the boards of Gateway Hospital and the Women's Economic Development Corporation. He has also served as board president of the Los Angeles chapter of the American Cancer Society and on the boards of the Braille Institute, UCLA Management Education Associates, and the American Heart Association.

## **BARBARA MATHEWS**



Barbara Mathews is vice president, associate general counsel, chief governance officer, and corporate secretary for Edison International and Southern California Edison. She is responsible for corporate governance and securities law matters. She joined the law department in 1996 as an assistant general counsel.

Prior to that, she was a partner in the law firm of Arnold & Porter, where she served in the Los Angeles, Washington DC, and Denver offices. She began her legal career as a law clerk for the Hon. Helen J. Frye, United States District Court Judge for the District of Oregon.

Barbara received her bachelor's degree in political science from The Colorado College and a J.D. from Catholic University Law School.

She serves on the board of directors of the Society of Corporate Secretaries & Governance Professionals and as president for its L.A. chapter. She also serves on the board of directors of the National Organization of Parents of Blind Children.

## **ALLEN W. MATHIES, JR., M.D.**



Allen Mathies is president emeritus of Huntington Memorial Hospital. He holds a bachelor's degree in zoology from Colorado College, a master's and Ph.D. in parasitology from Columbia University, and an M.D. cum laude from the University of Vermont College of Medicine. He is dean emeritus of the Keck School of Medicine at USC.

A life member of the board, Allen is a past chapter chairman and vice chair. He served as chair of the Southern California Regional Red Cross Blood Services from 1988-1990 and was a member of the National Red Cross Board of Governors. In addition to his Red Cross service, he has served on the CARES Advisory Council, Occidental College Board of Trustees, Pacific Clinics Advisory Committee and Visiting Nurse Assn. Board.

Allen and his wife, Weta, have two sons, Bill and John. In his leisure time, he enjoys singing, gardening and tennis.

## **BOWEN H. (BUZZ) McCOY**



**Buzz McCoy is president of Buzz McCoy Associates, Inc. He is a real estate and business counselor, an educator and a philanthropist. He retired as a partner of Morgan Stanley & Co, Inc., where he directed the firm's real estate finance activities and West Coast operations. He received a bachelor's degree in economics from Stanford University and an MBA from Harvard Business School.**

**A member of a long-time Red Cross family, McCoy has been a volunteer for many years, including as a member of the Junior Red Cross. He is a past chapter chairman, vice chair, and treasurer. He has also served on the Southern California Regional Red Cross Blood Services Board of Directors. McCoy has served in leadership positions at numerous community organizations, including the Urban Land Institute, Urban Land Foundation, Counselors of Real Estate, Stanford Alumni Association, Stanford University Center for Economic Policy Research, Hollywood Bowl, Hoover Institution, UCLA Medical Center Ethics Committee and USC Thornton School of Music. Mr. McCoy has published more than 75 magazine articles on the subject of business ethics and real estate finance and is publishing two books.**

**McCoy and his wife, Barbara, have six children and six grandchildren. They spend their leisure time at their hiking ranch in Topanga.**

## **CHERYL MOERSEN**



**Cheryl Moersen is a principal with Ernst & Young and a line leader for the company's advisory services, IT risk and assurance service for the West Sub Area (comprising 14 offices in the Western United States).**

**With more than 20 years of experience, Cheryl is responsible for development and execution of the IT risk and assurance transformation strategy and the integration, quality and management of IT risk, assurance and advisory services provided to Ernst & Young's clients.**

**Cheryl serves as the Professional Women's Network (PWN) Leader for the West Sub Area and has also served as a member of the Area Gender Equity strategy team. She is also a member of the United Way's Women's Leaders.**

## RENÉ MORTENSEN



René Mortensen retired from Aerospace Corp. and TRW after 28 years as a department manager and director of advanced research programs for the Air Force. He came to the United States in 1957 with a master's degree in engineering from the Technical University of Denmark.

René has held numerous volunteer chapter leadership positions since joining the chapter as a volunteer in 1993, including chapter disaster duty officer and chair of the Response Volunteer Committee. He has served as a disaster volunteer on 22 national disaster assignments and now focuses on local chapter management issues, in addition to serving as a member of the chapter Speaker's Bureau.

René has two adult children and one grandson. He lives in Manhattan Beach with his four-legged friend Cognac.

## CHRISTINE NEAL



Christine Neal is vice president and treasurer of Los Angeles-based Unified Western Grocers, Inc., the largest wholesale grocery cooperative in the Western United States. She is responsible for the company's strategic planning activities and for managing the capital structure, which includes lending arrangements and shareholders' equity, as well as overseeing the Cash Management, Tax and Payroll departments.

Before joining Unified, Christine served as chief financial officer for the California Restaurant Association, the largest state restaurant and hospitality trade organization in the United States. She also served as controller for Gelson's Markets. Christine earned her bachelor's degree in accountancy and finance from Miami University in Oxford, Ohio, and is a Certified Public Accountant.

Christine is currently serving as vice chair of the board. She and her husband reside in Long Beach.

## KIRK NELSON



Kirk Nelson is a firefighter with the L.A. County Fire Department. A nine-year veteran, Kirk is currently a hazardous materials specialist engineer on the Haz-mat team at L.A. County Fire Station 129 in Lancaster.

Kirk first joined the Red Cross Butte County (Chico) chapter in 1994 as a disaster volunteer and a Health and Safety instructor. He was elected to that chapter's Board of Directors and served as board chair from 1998-2000.

Since becoming a Greater Los Angeles volunteer in 2001, Kirk has worked on nearly 100 local and national disaster assignments, including running a 3,000-person shelter in Oroville, Calif. after severe flooding in 1997. He has been the disaster chair for the Greater Los Angeles chapter's Santa Clarita district for the last eight years.

Kirk and his wife, Karen, reside in Santa Clarita with their two young sons, Conner and Gavin.

## WILLIAM A. NIESE



William Niese is retired from the *Los Angeles Times*. His education includes a bachelor's degree in industry and labor relations from Cornell University and a LLB cum laude from New York State University at Buffalo.

Bill is a past chapter chairman, a life member of the board, and has been first vice chair and a member of the Human Resources Committee. He also has served as a member of the Southern California Regional Blood Services Board of Directors and of the L.A. County Consortium. In addition to his Red Cross service, he has served on the boards of the Puente Learning Center and Lutherland of the West.

## **JOHN PACKWOOD**



John Packwood is principal with Stonefield Josephson, Inc. Before joining Stonefield Josephson, he was an assurance partner with Grant Thornton and KPMG, LLP.

He is currently serving as board treasurer and chair of the Audit Committee.

With over twenty years of experience, he has focused on mid-sized, public and privately held businesses in a variety of industries including retail, manufacturing, technology, internet and e-commerce companies. In addition to traditional audit services, John also brings experience in acquisition, due diligence and transaction support. A Certified Public Accountant, John earned a bachelor of science degree in business administration from California State University, Long Beach.

## **ROBERT C. PETERSEN**



Bob Petersen is senior vice president of Union Bank of California's Commercial Banking Group, which provides wholesale lending and other banking services to Southern California-based companies. Prior to joining Union Bank, Bob worked at Wells Fargo Bank in various positions. Bob received a bachelor's degree from the University of Washington and a master's degree in business administration from UC Berkeley. He also graduated from the Pacific Coast Banking School.

Bob is on the board of directors of the Los Angeles Make-A-Wish Foundation and West Coast Sports Associates, which provides athletic programs to underprivileged youth. He is a corporate volunteer for the Music Center, a founding director of the Manhattan Beach Youth Basketball League and a director of the Los Angeles Rotary Club, serving as chair of the Ambassadorial Scholarship Committee.

Bob lives in Manhattan Beach with his wife, Maryanne. His two children, Jason and Shelly, attend college.

## JAY RODRIGUEZ



Jay Rodriguez retired from NBC as vice president, Corporate Information. His education includes Mt. San Antonio College and the University of California, Riverside.

A Red Cross volunteer for more than 60 years, since he was president of the Junior Red Cross in high school, Jay has been on the ARCGLA board of directors for 22 years. Jay has served as chapter chair and vice chair for Communications, Public Support and Facilities. He is a life member of the board. Outside the chapter, Jay has served on the State Service Council and a member of the national ARC Board of Governors. As a member of the Board, he represented the national organization at several international meetings, including a delegation at the International Red Cross and Red Crescent Conference.

Jay is a past president of the Greater Los Angeles Press Club, past chairman of the State Commission for Peace Officers Standards and Training and past chair of the National Latino Communications Center. He lives in Palm Desert with his wife, Marolyn. He has three grown children, Paul, David and Steven.

## JEFFREY B. SAKAGUCHI



Jeffrey B. Sakaguchi is a community volunteer with more than 30 years of business and executive management experience. Most recently, he was president and chief operating officer of Evolution Robotics Retail, Inc., an early-stage technology company developing robotic vision and object recognition software for the retail industry. Prior to that, Jeff was a senior partner with Accenture, a leading global management and information technology consulting firm and a senior engagement manager with McKinsey & Company, a renowned strategy consulting firm. He was also an engineering manager with Chevron Corp. Jeff received his bachelor's degree in chemical engineering from the Massachusetts Institute of Technology (MIT) and a master's degree in business administration from the Wharton School of the University of Pennsylvania.

Jeff was appointed Commissioner of the White House Initiative on Asian Americans and Pacific Islanders and is an educational counselor for MIT.

Jeff has served on the chapter board of directors for four years and is currently serving as chairman of the board.

He lives in Manhattan Beach with his wife, Nini, and son, Cooper.

## **DARREN SEIDEL**



Darren Seidel is vice president/CFO of Warner Bros. Home Entertainment Group International, responsible for finance and strategy for the Video, Digital and Games Distribution businesses outside of North America. Prior to joining Warner Bros., Darren held a variety of executive positions at the Walt Disney Company, including integrating and growing The Baby Einstein Company. He was also CFO of a Disney Consumer Products business unit and helped lead the Walt Disney Studios Home Entertainment business in Asia Pacific and Latin America. Prior to joining Disney, Darren was the co-founder of Netsmart, a business-to-business Internet service.

Darren received his bachelor's degree in business and marketing from San Diego State University and an MBA from the University of Notre Dame.

Darren is currently serving as co-chair of the chapter's Development Committee. He is married with three children and resides in Pacific Palisades.

## **ELLIS M. STANLEY, SR.**



Ellis Stanley is the director of Western Emergency Management Services at Dewberry LLC. Prior to joining Dewberry, Ellis served as general manager of the city of Los Angeles Emergency Preparedness department, where he worked for 10 years. Before that, he was director of the Atlanta-Fulton County Emergency Management Agency. With 32 years of experience in the emergency management field, Ellis has worked at three national political conventions, the 1996 Olympic Games in Atlanta and the 1994 Papal visit and World Youth Conference in Denver.

He is currently serving as chair of the chapter's Disaster Response Committee.

Ellis has served as past president of the International Association of Emergency Managers and has led delegations of emergency management professionals to China, Japan and other countries. He began his Red Cross affiliation as a member of the board of directors in Atlanta, where he served as vice chairman.

## CSABA TAKACH



**Csaba G. Takach is senior vice president of Worldwide Logistics, Engineering Technology and International Operations for Mattel, Inc. Prior to joining Mattel, Csaba was with The Pillsbury Company for nine years as vice president of Engineering and vice president of International Operations. During this time, he also held the positions of general manager in Japan and Israel. Csaba also worked for 15 years at Kraft Foods, Inc., where he was business manager of Grocery Operations for Kraft USA.**

**Csaba received his bachelor's and master's degrees from the University of Hungary.**

**He and his wife, Maria, have one daughter and live in Palos Verdes Estates. In his leisure time, Csaba enjoys travel, running, walking, reading and classical music.**

## JILL CARTER VALENTI



**Jill Valenti is a community volunteer. She holds a bachelor's degree in psychology and attended Connecticut College for Women and the University of Miami.**

**Jill has been an active American Red Cross volunteer since 1981. She served with the Tampa Bay chapter in Florida, where she was chapter chair, and with the Seattle-King County chapter before coming to Los Angeles. She served on numerous committees and state service councils and won several local and state awards. As a member of the Greater Los Angeles board of directors, Jill served as chapter chair, as well as chair of the Development Committee. She helped launch the chapter's Tiffany Circle Society of women leaders and philanthropists and is active in the national Tiffany Circle.**

**Jill and her husband, Joe, are the parents of two adult children, Mark and Grey, and have three grandchildren.**

## Regional Leadership Team

### PAUL SCHULZ



Paul Schulz is CEO of the American Red Cross Los Angeles Region. Prior to joining the Red Cross in 2007, Paul was senior vice president of Yahoo!, where he served in a number of capacities and reported to the president. Before that, Paul worked at Recycler Classifieds, the largest weekly publisher of private party classified ads in the U.S., eventually becoming the president. The company was sold to the Los Angeles Times in 1998. Paul began his career at McKinsey and Company in Los Angeles as an engagement manager.

Paul holds a bachelor's degree in economics from Claremont McKenna College and a master's degree in philosophy, politics and economics from the University of Oxford, England, where he was a Rhodes Scholar.

In the non-profit sector, Paul serves on the board of directors of Goodwill Industries of Southern California and the California Community Foundation. He is a member of the LA5 Rotary Club and a former board member of the Big Brothers and Big Sisters of Los Angeles.

Paul has three children and lives in La Canada, where he enjoys coaching youth sports.

### STEVE ALLEN



Steve Allen is the Chief Development Officer for the Los Angeles Region, working with all seven chapters and their boards of directors to develop strategies and initiatives for generating donations to the Red Cross.

Prior to joining the Red Cross, Steve was executive director of development for the Salvation Army Southern California Division. In that capacity, he was responsible for overseeing the , areas of corporate giving, PR and communications, foundations, direct mail, major gifts, planned giving and board development. He began working for the Salvation Army in 1995 as the director of social services.

Steve holds a bachelor of art's degree in youth and community studies from Manchester Metropolitan University, Manchester, England. He also completed the master's program in applied social studies and social work from the University of Liverpool, England.

Steve lives in Glendora with his wife, Barbara, and has two adult sons.

## **TIMOTHY ARCHULETA**



Timothy Archuleta is the Health & Safety Officer overseeing the following areas: CPR, first aid and aquatics training; the Nurse Assistant Training (NAT) program; the Competency Evaluation Program; retail product sales; and the marketing of Lifeline.

Timothy joined the chapter in 2004 as the Sales and Marketing manager in Health & Safety and served as Assistant Preparedness Officer prior to being promoted to his current position. Before that, Timothy worked for Barnes and Noble bookstores for seven years in increasingly responsible positions. He started as a bookseller in Phoenix and was promoted four times before becoming the general manager of the Santa Clarita store.

Timothy graduated from New Mexico State University in 1995 with bachelor's degrees in accounting, financial management and economics.

## **BEN GREEN**



Ben Green is CEO of the San Gabriel Pomona Valley Chapter. Prior to joining the Red Cross in 2007, Ben spent 18 years in non-profit management, serving as executive director of both the Pasadena Senior Center and the Mizell Senior Center in Palm Springs. Before that, he managed community programs, facilities and events as a recreation professional for 15 years.

Green's relationship with the Red Cross began at age 15, when he volunteered for the lifesaving program. He then served as a first aid and aquatics instructor throughout the 1970s and became a credentialed water safety instructor trainer in 1975.

He has served on the Board of Directors for the Mid-America Chapter of the American Red Cross in Chicago. He was also an active volunteer with three other chapters in Springfield and Rolla, Missouri, and in Riverside County. Currently, Ben is a board member of the Pasadena Chamber of Commerce and a member of the Pasadena Rotary Club.

## MICHAEL KLEINER



Michael Kleiner is the Emergency & Disaster Response Officer. Prior to joining the chapter in March 2007, Michael, a Certified Emergency Manager (an accreditation given by the International Association of Emergency Managers), was a bio-terrorism consultant for two California counties. In addition, he was president of Computer Medic, LLC, which provided technology services to government clients, businesses and private homes. Michael has also worked as the director of the Office of Emergency Medical Services (EMS) in Connecticut; the chief operating officer (chief paramedic) for the medical component of the City and County of San Francisco's 9-1-1 system; and an EMS district commander and paramedic for the Los Angeles City Fire Department.

He holds a bachelor's degree from the University of Redlands and a master's degree in health sciences from Touro University International. Mike also has a lifetime community college teaching credential and a professional development series certification from FEMA Emergency Management Institute.

Mike lives in Oxnard with his family.

## MICHELLE McCARTHY



Michelle McCarthy is the chapter's Chief Financial and Administrative Officer overseeing Finance, Accounting, Information Technology, Facilities, Human Resources, and other critical projects. She earned a bachelor's degree in business administration and an executive MBA from USC.

Prior to joining the Red Cross, Michelle was the senior associate vice president of Finance and Administration at USC, where she was responsible for the university's central financial office and overseeing projects and daily operations. Before working at USC, Michelle had her own consulting firm specializing in strategic planning and technology.

Michelle has five children, and in her spare time, she coaches soccer and does pro-bono financial management for small, non-profit organizations.

## JOHN PACHECO



John Pacheco, Executive Director of the Santa Monica Red Cross, has been actively involved in the delivery of Red Cross services throughout the Greater Los Angeles area for more than 34 years. Prior to joining the Santa Monica Chapter, John served as the associate chapter manager for the Greater Los Angeles Chapter.

As an administrator level national disaster staff member, John has provided supervision and management oversight for a variety of disasters from earthquakes and wildfires in California to tornado and floods in the Midwest to hurricanes on the Gulf Coast and Florida. He is a national Red Cross instructor and instructor trainer in a variety of management and disaster programs.

John has created a variety of new partnerships in the community through the Santa Monica Organizations Active in Disaster, created after Hurricane Katrina. The organization now boasts over 50 member agencies.

John has a bachelor's degree and a master's degree in Clinical and Community Psychology from Cal State University, Northridge and attended a postgraduate Business Program at the UCLA Anderson School of Business.

## CHARLIE SARDOU



Charlie Sardou is Chief Communications Officer, overseeing the chapter's marketing and communications, preparedness education and volunteer services. He joined the chapter in 2008 as a consultant and served as Interim Chief Communications Officer prior to being promoted to his current position.

Before joining the American Red Cross, Charlie was the Director of Media for iCrossing, OMMA magazine's 2005 Search Agency of the Year. During his tenure at iCrossing, he created marketing strategies for numerous clients including Citibank, Disney, AG Edwards, Ross, Restoration Hardware, and ESPN. Charlie also consulted for Overture and served as e-commerce manager for ShopD.com, a website designed to sell offshore private label products.

Charlie holds a bachelor's degree in economics from UC Berkeley and an MBA in marketing from Wake Forest.

## OPHELIA PORTILLO



**Ophelia Portillo is the executive assistant to Chief Executive Officer Paul Schulz. In this capacity, she also provides administrative support and coordination for the Board of Directors in planning and preparing for meetings.**

**Ophelia joined the Red Cross with over 12 years of administrative experience providing support to top-level executives. Prior to joining the Red Cross in 2007, Ophelia was the executive assistant to the regional senior vice president of Operations and the regional CFO for Tenet Healthcare, who had oversight for 18 CEOs and Hospitals in the Western region. Before that, she was the executive assistant to the managing partner at Curiale Hirschfeld & Kraemer, a boutique labor and employment defense law firm in West Los Angeles.**

**Ophelia lives in Monterey Park with her husband, Anthony, and has four children, Brianna, Sean, Blas and Marcus. She is the assistant den leader for her son's Cub Scout den and enjoys spending time with her family.**